



## The Brighton on Bay

Withdrawn

\$ 720,000

🛏 1.5 🚪 1 🏠 1

25 | 1 Asling Street - Brighton - VIC

📏 81 m<sup>2</sup> Floor Area

Light and bright east facing apartment in the heart of Brighton

This one bedroom plus study apartment boasts lots of natural light and is located in the heart of Brighton. Enjoy a large kitchen with island bench and great storage, as well as a spacious master bedroom with generous built in robes. Located on the first floor facing East into the central courtyard area, this apartment comes with a car park space and storage cage in the secure basement parking. The Brighton on Bay offers a range of luxury facilities including a swimming pool, gym and club-house.

### Amenities

📖 Study

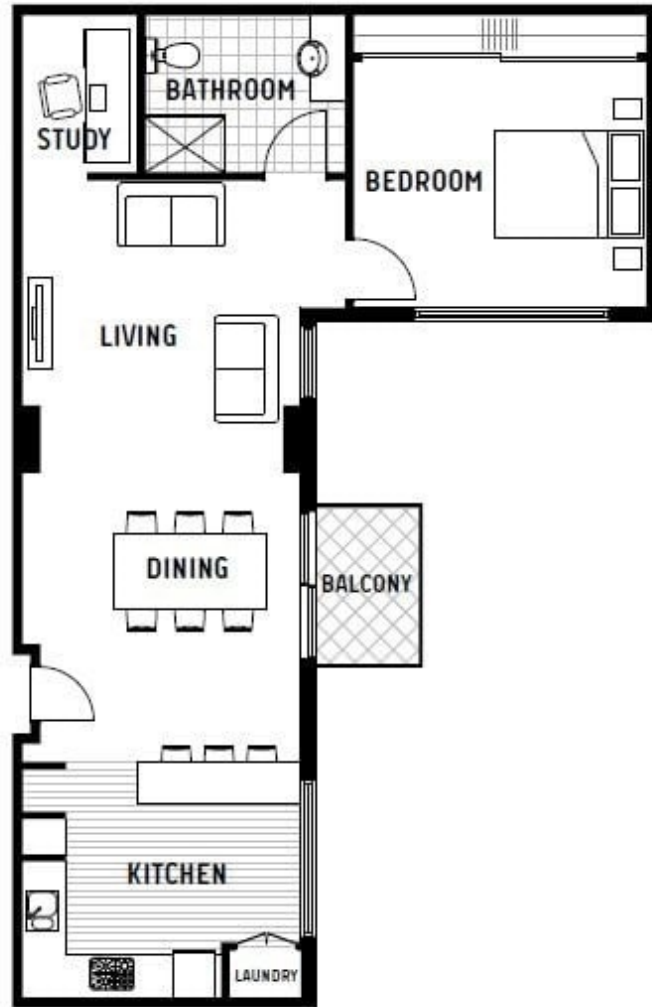


1800 550 550  
keyton.com.au

\*Photographs are for illustrative purposes. Some images may depict items not provided by Keyton within the units such as furniture and other decorative items.

25 | 1 Asling Street - Brighton - VIC

🏠 1.5 🛏 1 🚪 1



Area

Apartment	81.25 sqm
-----------	-----------

This is an indicative floor plan that may vary according to home location within the village/resort. The information, dimensions and specifications on this floor plan are believed to be correct but is not guaranteed and may change without notice. Any illustrations are an artist's impression only and subject to change. Keyton gives no warranty concerning the accuracy of the material or information displayed in this brochure and all such warranties (whether implied or otherwise) are excluded to the extent permitted by law. Prospective purchasers should make their own enquiries.

1800 550 550  
keyton.com.au