



## Abervale

## Withdrawn

\$ 565,000

🛏️ 2 🚪 1 🚗 1

213 | 50 Way - Grovedale - VIC

🏠 115 m<sup>2</sup> Floor Area

Modern upgraded unit set in a premium position of this delightful village

Offering all the ease of a flowing single-level layout, this light and bright upgraded unit boasts a new coat of paint, quality new floor coverings, and a stunning new kitchen with a stone benchtop and a bathroom loaded with quality fixtures and fittings, representing a great opportunity to live a low maintenance lifestyle. The floorplan is open to create more living space and integrate seamlessly with the outdoor entertaining area and established private gardens. The accommodation includes a walk-in robe to the main bedroom and built-in robe to the second, split system air conditioning, and an updated powder room.



1800 550 550  
keyton.com.au

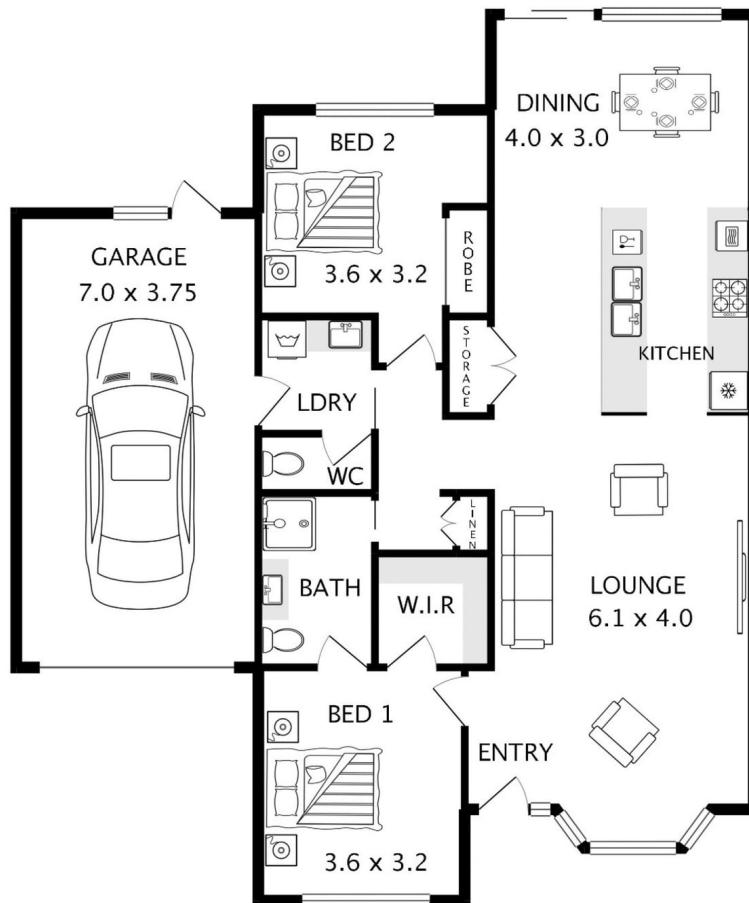
\*Photographs are for illustrative purposes. Some images may depict items not provided by Keyton within the units such as furniture and other decorative items.

213 | 50 Way - Grovedale - VIC

 2  1  1

# UNIT 213

2  1  1 



This is an indicative floor plan that may vary according to home location within the village/resort. The information, dimensions and specifications on this floor plan are believed to be correct but is not guaranteed and may change without notice. Any illustrations are an artist's impression only and subject to change. Keyton gives no warranty concerning the accuracy of the material or information displayed in this brochure and all such warranties (whether implied or otherwise) are excluded to the extent permitted by law. Prospective purchasers should make their own enquiries.