



Windsor Park

Withdrawn

\$ 305,000

🛏️ 2 🚽 1 🚗 1

94 | 120-130 townsend Road - St Albans Park - VIC

🏠 114 m² Floor Area

Open plan home with fresh new colour palette

This lovely two bedroom home is highlighted by a fresh new colour palette with new carpet and paint throughout. Located in Windsor Park retirement village, enjoy being close to the Bellarine Peninsula and just five kilometres from the Geelong CBD and waterfront. Other features include an open play layout, new cooktop, central gas heating and added convenience with a separate toilet and internal access from the remote controlled garage.

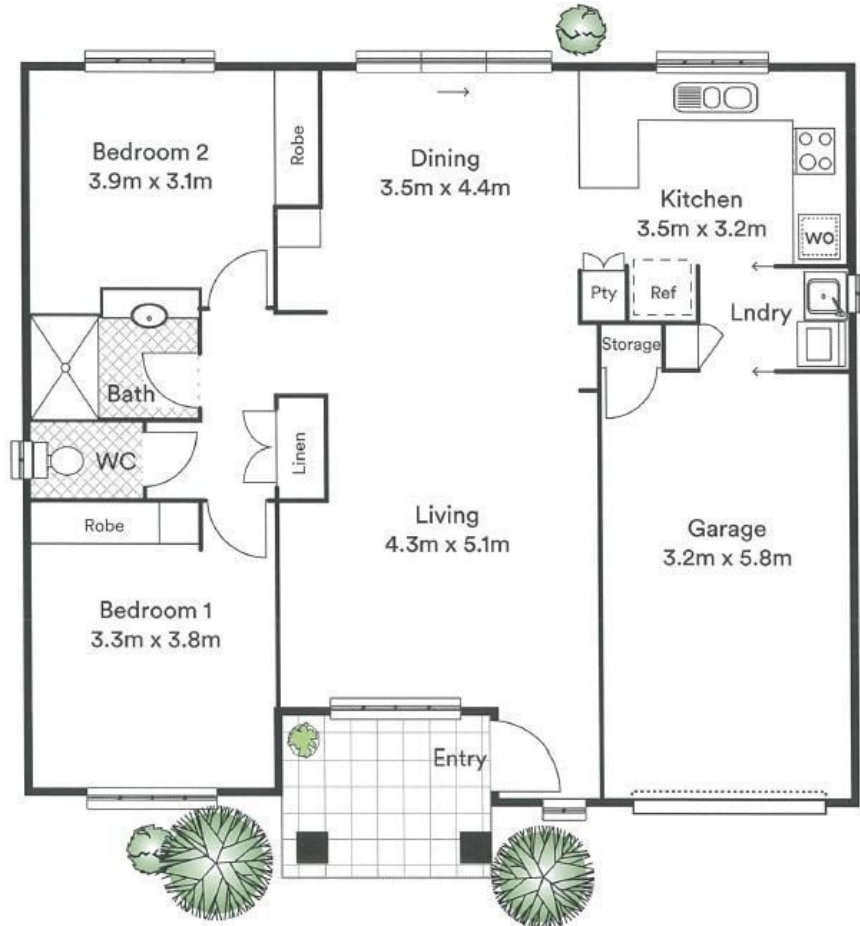


1800 550 550
keyton.com.au

*Photographs are for illustrative purposes. Some images may depict items not provided by Keyton within the units such as furniture and other decorative items.

94 | 120-130 townsend Road - St Albans Park - VIC

🛏️ 2 🍽️ 1 🚗 1



Area	Metric m ²	Squares	Square ft ²
Total	113.33	12.20	1219.77

This is an indicative floor plan that may vary according to home location within the village/resort. The information, dimensions and specifications on this floor plan are believed to be correct but is not guaranteed and may change without notice. Any illustrations are an artist's impression only and subject to change. Keyton gives no warranty concerning the accuracy of the material or information displayed in this brochure and all such warranties (whether implied or otherwise) are excluded to the extent permitted by law. Prospective purchasers should make their own enquiries.