



Classic Residences

Off Market

\$ 780,000

🛏️ 2 🚿 2

4 Sky | 3 Brewer Road - Brighton East - VIC

📏 100.2 m² Floor Area

Highly Sought After Two Bedroom "Sky-Level" Apartment: Contact Sales Manager Today!

Experience elevated living in this beautifully sunlit "Sky" level apartment at Classic Residences Brighton. The sought-after floorplan features a spacious open-plan living and dining area, complemented by a modern kitchen with stone benchtops and stainless-steel appliances. Step out onto the private balcony for a perfect relaxation or entertaining area. This apartment offers two double bedrooms, including a main with ensuite, and a well-appointed main bathroom with internal laundry. Additional features include north-facing orientation, built-in wall cabinetry, and heating and cooling for year-round comfort. Contact us today to arrange a viewing!

Amenities

- 🏠 Balcony
- 🧼 Dishwasher
- 🏠 Generous Storage Space
- 📺 Modern Appliances
- 🍳 Modern Kitchen
- 📍 North facing

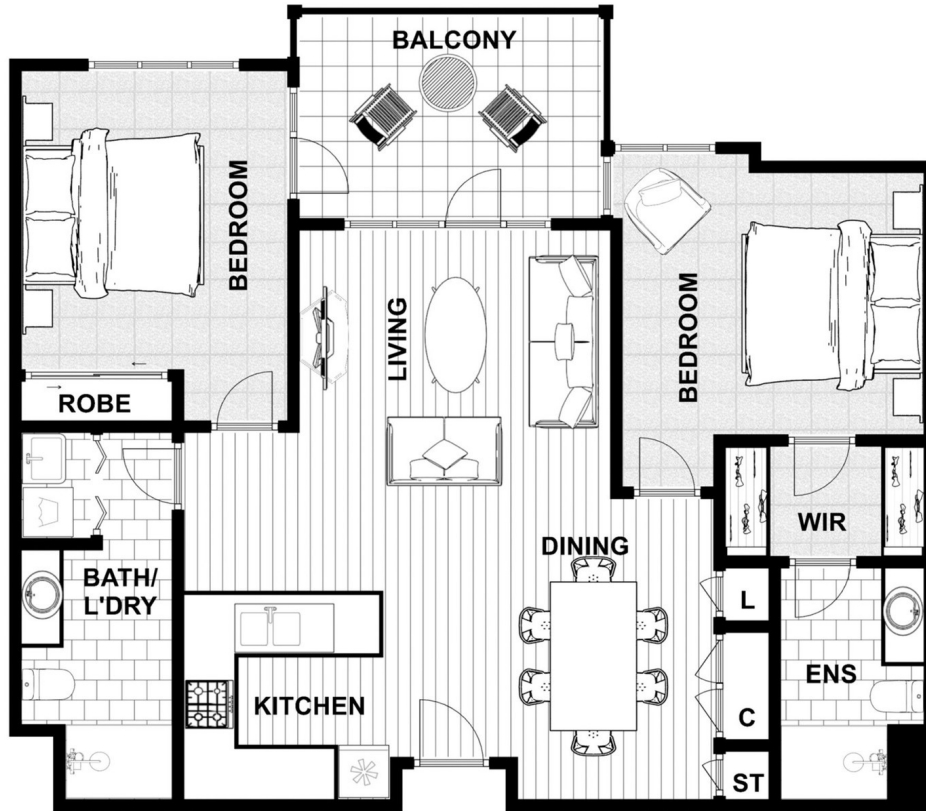


1800 550 550
keyton.com.au

*Photographs are for illustrative purposes. Some images may depict items not provided by Keyton within the units such as furniture and other decorative items.

4 Sky | 3 Brewer Road - Brighton East - VIC

 2  2



Internal Living	91.5 m ²
Balcony	8.7 m ²
Total Area	100.2 m ²

This is an indicative floor plan that may vary according to home location within the village/resort. The information, dimensions and specifications on this floor plan are believed to be correct but is not guaranteed and may change without notice. Any illustrations are an artist's impression only and subject to change. Keyton gives no warranty concerning the accuracy of the material or information displayed in this brochure and all such warranties (whether implied or otherwise) are excluded to the extent permitted by law. Prospective purchasers should make their own enquiries.