



Peppertree Hill

Off Market

\$ 510,000

🏠 2 🛏 1 🚿 1

07 | 15 Fulham Road - Rowville - VIC

📏 87.07 m² Floor Area

Stylishly Refreshed Twi-Bedroom Retreat – Call to inspect!

Welcome to a beautifully refreshed haven at Peppertree Hill. This two-bedroom retreat features open-plan living with a modern feel, complemented by a sleek kitchen with quality appliances and stone benchtops. Both bedrooms offer built-in robes and new carpets, while the spacious bathroom is accompanied by an additional separate toilet. Enjoy the fully fenced backyard—a private garden sanctuary ideal for entertaining. A detached single carport adds to the convenience of this exceptional retirement home.

Amenities

- 🏠 Carport
- 🌿 Courtyard
- 🛡️ Covered patio
- ♿️ Disability Access
- 🍽️ Dishwasher
- 🧱 Flooring - tiles

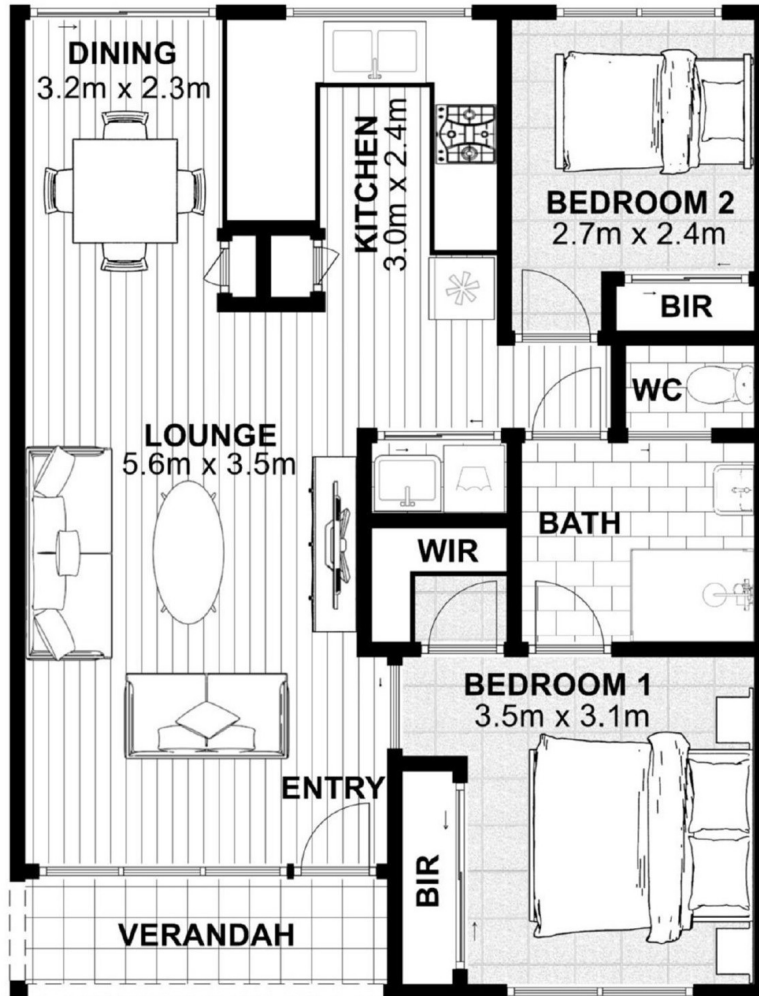


1800 550 550
keyton.com.au

*Photographs are for illustrative purposes. Some images may depict items not provided by Keyton within the units such as furniture and other decorative items.

07 | 15 Fulham Road - Rowville - VIC

🏠 2 🛏 1 🚪 1



Internal Living:	61.6m ²
Balcony:	0.0m ²
Verandah:	3.6m ²
Total Area:	65.2m²

This is an indicative floor plan that may vary according to home location within the village/resort. The information, dimensions and specifications on this floor plan are believed to be correct but is not guaranteed and may change without notice. Any illustrations are an artist's impression only and subject to change. Keyton gives no warranty concerning the accuracy of the material or information displayed in this brochure and all such warranties (whether implied or otherwise) are excluded to the extent permitted by law. Prospective purchasers should make their own enquiries.