



Peppertree Hill

Off Market

\$ 510,000

🏠 2 🛏 1 🚿 1

22 | 15 Fulham Road - Rowville - VIC

📏 65.2 m² Floor Area

Beautifully Refreshed Unit with Modern Kitchen and Private Garden

Experience the charm of this refreshed two-bedroom unit at Peppertree Hill. Enjoy open-plan living, a modern kitchen with quality appliances and stone benchtops, and fresh decor throughout. The bedrooms feature built-in robes and new carpets, while the spacious bathroom includes an additional separate toilet. The fully fenced backyard offers a private garden and entertaining area, with a detached single carport conveniently located close to the unit. Enquire Today!

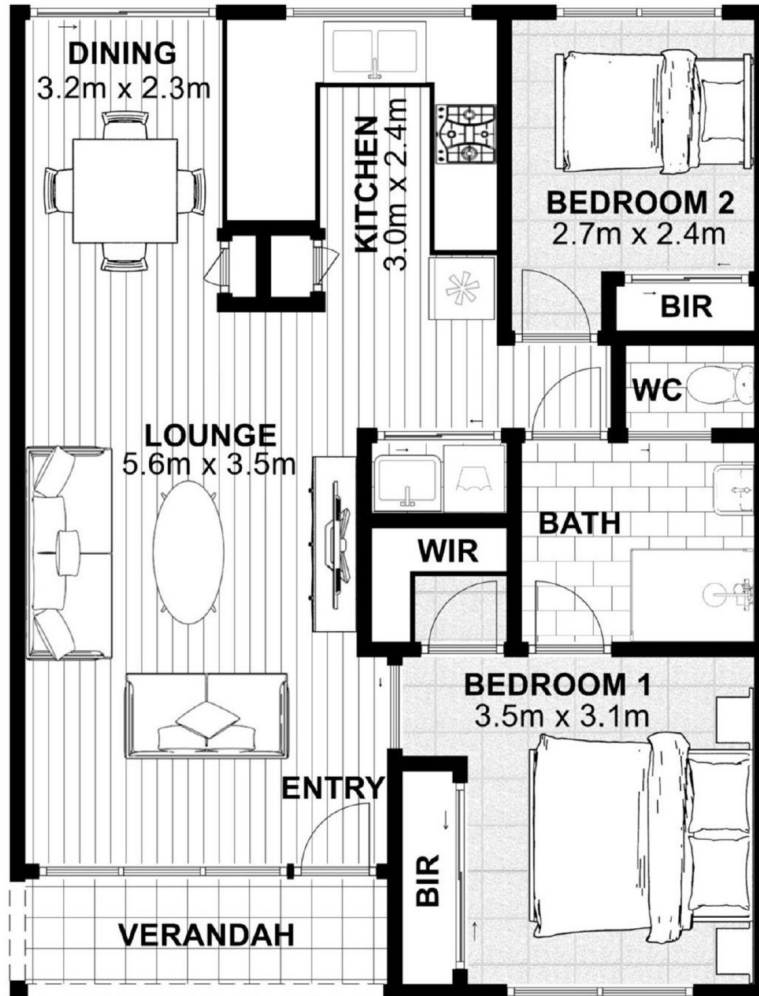
Amenities

- 🏠 Carport
- 🔄 Close To Facilities
- 🌸 Courtyard
- 🛡 Covered patio
- ♿ Disability Access
- 🧼 Dishwasher



1800 550 550
keyton.com.au

*Photographs are for illustrative purposes. Some images may depict items not provided by Keyton within the units such as furniture and other decorative items.



Internal Living:	61.6m ²
Balcony:	0.0m ²
Verandah:	3.6m ²
Total Area:	65.2m²

This is an indicative floor plan that may vary according to home location within the village/resort. The information, dimensions and specifications on this floor plan are believed to be correct but is not guaranteed and may change without notice. Any illustrations are an artist's impression only and subject to change. Keyton gives no warranty concerning the accuracy of the material or information displayed in this brochure and all such warranties (whether implied or otherwise) are excluded to the extent permitted by law. Prospective purchasers should make their own enquiries.