



## Classic Residences

Off Market

\$ 275,000

🛏 1 🚿 1

G.25 | 3 Brewer Road - Brighton East - VIC

🏠 44 m<sup>2</sup> Floor Area

### Ground Floor Apartment Close to all Amenities

Enjoy relaxed retirement living in this ground floor apartment at Classic Residences Brighton. Offering open plan living, a modern kitchenette with electric cooktop, fridge and microwave, plus a spacious bedroom with BIR and ensuite. Stay comfortable year-round with ducted heating and cooling. Ideally located close to the lift and laundry facilities, this home has everything you need for a peaceful, easy lifestyle.

#### Amenities

- 🔄 Close To Facilities
- 🌳 Close to parks
- 🚗 Close to Transport
- 🌸 Courtyard
- 📡 Ducted cooling
- 📡 Ducted heating

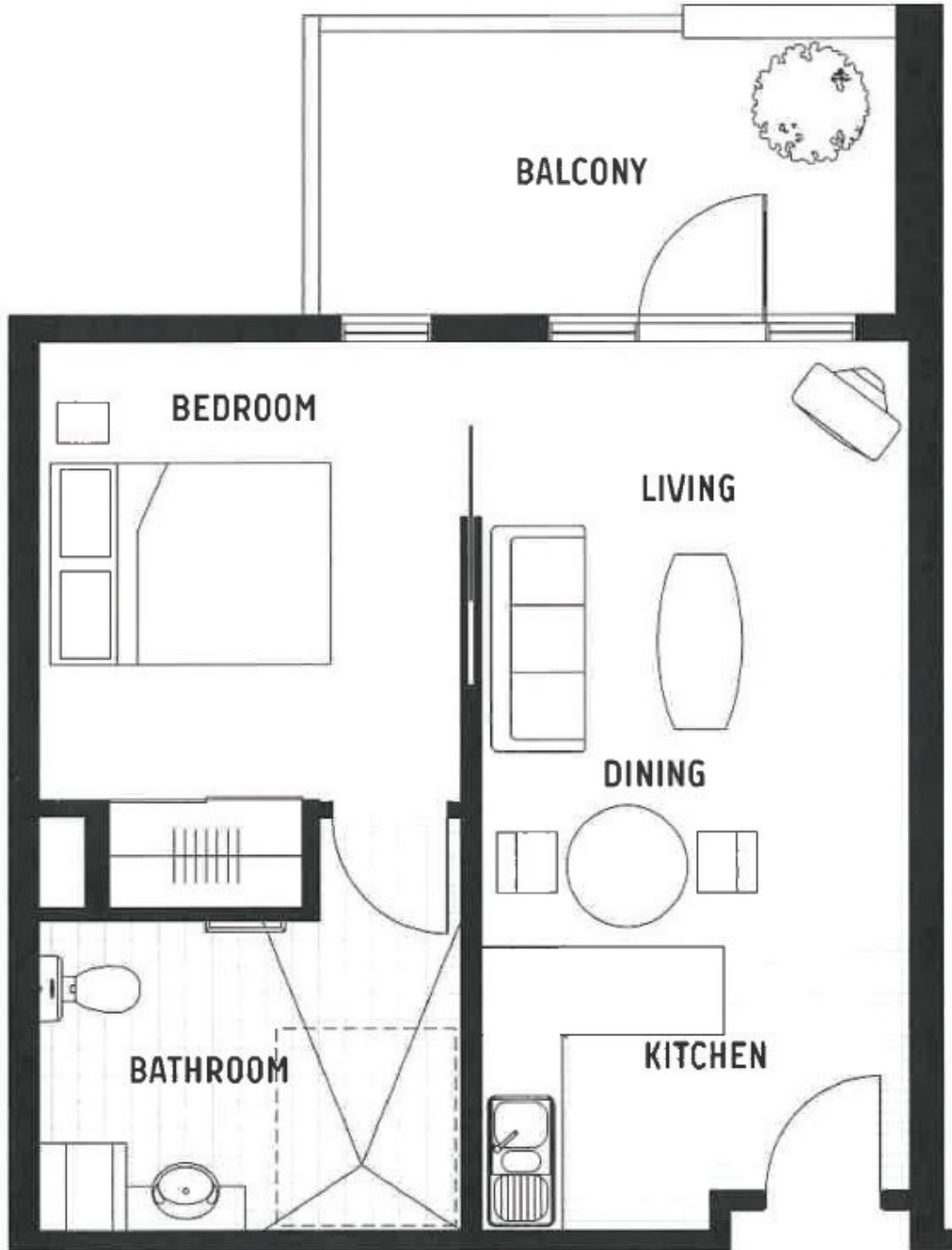


1800 550 550  
keyton.com.au

\*Photographs are for illustrative purposes. Some images may depict items not provided by Keyton within the units such as furniture and other decorative items.

G.25 | 3 Brewer Road - Brighton East - VIC

 1  1



Internal Living	44 m <sup>2</sup>
Total Area	44 m <sup>2</sup>

This is an indicative floor plan that may vary according to home location within the village/resort. The information, dimensions and specifications on this floor plan are believed to be correct but is not guaranteed and may change without notice. Any illustrations are an artist's impression only and subject to change. Keyton gives no warranty concerning the accuracy of the material or information displayed in this brochure and all such warranties (whether implied or otherwise) are excluded to the extent permitted by law. Prospective purchasers should make their own enquiries.