






## The Village Williamstown

Under Offer

\$ 700,000

 2  1  1







37 | 1-49 Paas Place - Williamstown - VIC

 87.1 m<sup>2</sup> Floor Area

### Corner Position with Private Courtyard

This two-bedroom corner unit is set within a pet-friendly retirement community and offers low-maintenance, independent living. The open plan layout links the living and dining area with a modern kitchen featuring quality appliances and ample storage. Sliding doors lead to a private alfresco courtyard, providing a secure outdoor space to enjoy year-round. Complete with a single lock-up garage with internal access and a dedicated laundry, this home delivers privacy, practicality and everyday comfort.

### Amenities

-  Corner position
-  Courtyard
-  Modern Appliances
-  Modern Kitchen
-  Open Plan Living
-  Single Lock Up Garage With Internal Access

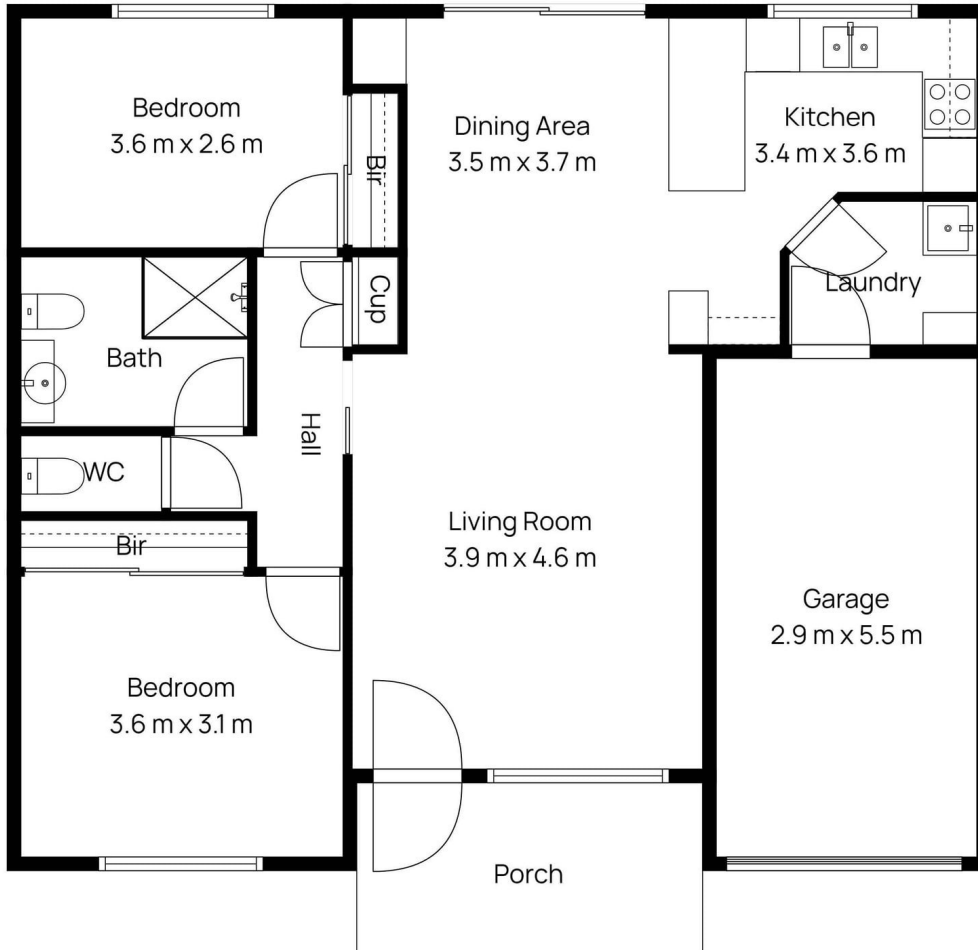


1800 550 550  
[keyton.com.au](https://www.keyton.com.au)

\*Photographs are for illustrative purposes. Some images may depict items not provided by Keyton within the units such as furniture and other decorative items.

37 | 1-49 Paas Place - Williamstown - VIC

 2  1  1



Garage	16 m <sup>2</sup>
Dining	13 m <sup>2</sup>
Kitchen	12 m <sup>2</sup>
Living	18m <sup>2</sup>
<b>Total Area</b>	<b>95m<sup>2</sup></b>

This is an indicative floor plan that may vary according to home location within the village/resort. The information, dimensions and specifications on this floor plan are believed to be correct but is not guaranteed and may change without notice. Any illustrations are an artist's impression only and subject to change. Keyton gives no warranty concerning the accuracy of the material or information displayed in this brochure and all such warranties (whether implied or otherwise) are excluded to the extent permitted by law. Prospective purchasers should make their own enquiries.